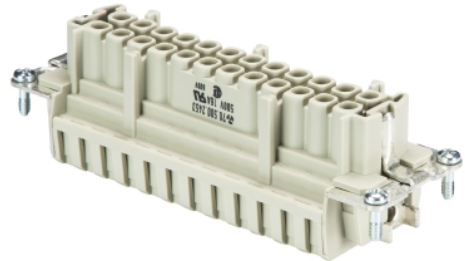


## Data sheet

Commercial Art.No.: 70.500.2453.3

Female insert BAS BUF SB 24 2,5 50

Female insert revos basic, 24-poles, rated current: 16A, rated voltage:500V, with tin-plated contacts



|                    |               |
|--------------------|---------------|
| Commercial Art.No. | 70.500.2453.3 |
| EAN                | 4015573374874 |
| Order Unit         | 10            |

Certificates / Approvals



## Technical data

### General

|  |        |
|--|--------|
| Inflammability class of insulation material acc. with UL94 | V0     |
| Color  | Grey   |
| Pollution degree   | 3      |
| Modular version  | No     |
| Operating temperature range min.                           | -40 °C |
| Operating temperature range max.                           | 120 °C |

### Connection Data

|  |                     |
|--|---------------------|
| Connection type                                | screw connection    |
| Number of poles                                | 24                  |
| Plus switching contacts                        | 0                   |
| Number of pole for rated current 2             | 0                   |
| Number of pole for rated current 3             | 0                   |
| Total number of poles (without ground contact) | 24                  |
| Min. conductor diameter rigid (solid/stranded) | 0.5 mm <sup>2</sup> |
| Max. conductor diameter rigid (solid/stranded) | 2.5 mm <sup>2</sup> |
| Protective contact                             | yes                 |

### Technical Data UL/CSA

|  |                     |
|--|---------------------|
| Rated voltage according to UL/CSA          | 600 V               |
| Rated current according UL                 | 16 A                |
| Rated current according CSA                | 16 A                |
| Min. conductor cross section flexible wire | 0.5 mm <sup>2</sup> |
| Max. conductor cross section flexible wire | 2.5 mm <sup>2</sup> |
| Conductor cross section flexible AWG wire  | 22-14 AWG           |

### Model

|              |    |
|--------------|----|
| With housing | No |
|--------------|----|

#### Contacts

|                    |              |
|--------------------|--------------|
| Contact material   | Copper alloy |
| Contact resistance | ≤ 1.5 mOhm   |
| Wire strip length  | 7 mm         |

#### Screws head design/recomm. Torque

|                         |               |
|-------------------------|---------------|
| Mounting screws         | H1/0.5-0.7 Nm |
| Clamping screws         | H1/0.5-0.7 Nm |
| Ground conductor screws | H2/1.2-1.6 Nm |

#### Technical Data DIN EN 61984

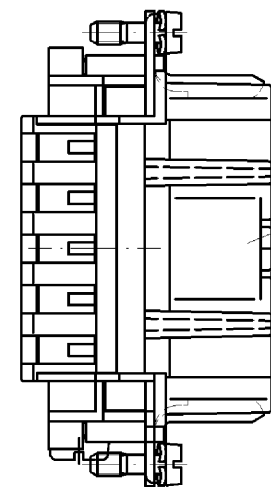
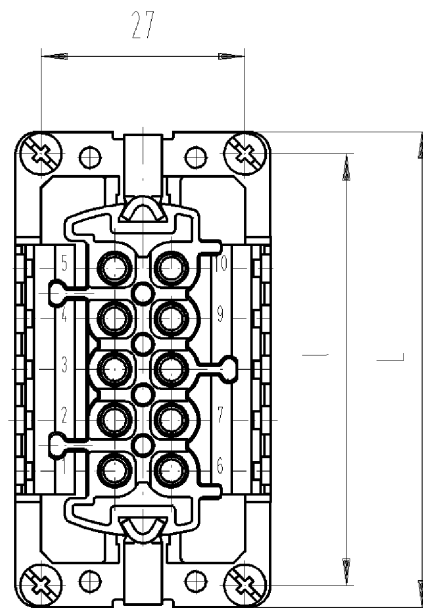
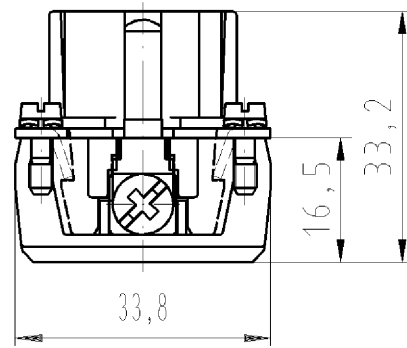
|                           |       |
|---------------------------|-------|
| Nominal voltage           | 500 V |
| Rated voltage face/ground | 500 V |
| Nominal current           | 16 A  |
| Rated impulse voltage     | 6 kV  |

#### Classification

|            |          |
|------------|----------|
| ECLASS 11  |          |
| ECLASS 8.1 | 27440205 |
| ETIM 7.0   | EC000438 |
| ETIM 6.0   | EC000438 |
| ETIM 5.0   | EC000438 |
| ETIM 4.0   | EC000438 |

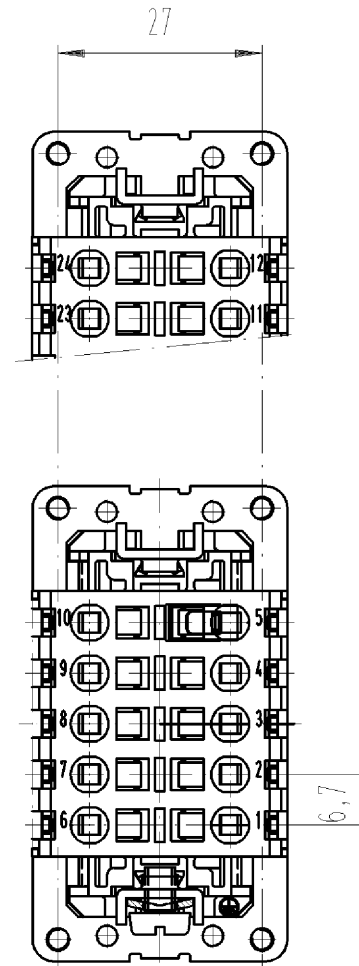
#### Product compliance

|                              |                    |
|------------------------------|--------------------|
| ROHS conformity status       | Compliant/Exempted |
| ROHS exceptions              | III-6(c)           |
| REACH-SVHC conformity status | Duty-To-Declare    |
| REACH-SVHC substances        | Lead               |
| REACH-SVHC CAS numbers       | 7439-92-1          |



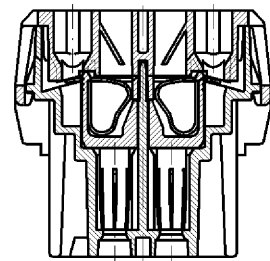
Aufdruck für 10 und 16-polig  
print for 10 and 16-pole

Aufdruck für 6 und 24-polig  
print for 6 and 24-pole



mit Federkraftanschluß  
with spring connection



dargestellt: 10-polig  
pictured: 10-pole



a Weitere Daten siehe Katalog  
further data see catalog

Montageanleitung in jeder Verpackung  
assembly instruction in every package

| Teile - Nr.<br>part no. | Typ<br>type          | L     | l    | Aufdruck, schwarz<br>black printed |
|-------------------------|----------------------|-------|------|------------------------------------|
| 70.500.0653.0           | BAS BUF 6 2,5 50     | 49.8  | 44   | 70.500.0653                        |
| 70.500.1053.0           | BAS BUF 10 2,5 50    | 62.8  | 57   | 70.500.1053                        |
| 70.500.1653.0           | BAS BUF 16 2,5 50    | 83.3  | 77.5 | 70.500.1653                        |
| 70.500.1653.3           | BAS BUF SB 16 2,5 50 | 83.3  | 77.5 | 70.500.1653.3                      |
| 70.500.2453.0           | BAS BUF 24 2,5 50    | 109.8 | 104  | 70.500.2453                        |
| 70.500.2453.3           | BAS BUF SB 24 2,5 50 | 109.8 | 104  | 70.500.2453.3                      |

|                   |               |   |   |   |  |           |          |  |                |              |  |
|-------------------|---------------|---|---|---|--|-----------|----------|--|----------------|--------------|--|
| Freitoleranz nach |               |   |   | CAD - Zeichnung, keine manuellen Änderungen |  |           |          | 1.Verwendung: -                        |                | Bl.: 1 von 1 |  |
|                   | /             | Maßstab<br><br>1:1  | Werkstoff und Oberfläche:<br><br>Farbe: kieselgrau<br>colour: pebble grey             |   | 2003   | Tag       | Name     | Zeichnung Nr.<br><br>70.500.0653.0 01K | Index<br><br>a |              |  |
|                   | /             |   |   |   | Entworfen  | 09.07.    | Bauer F. |  |                |              |  |
|                   | /             |   |   |   | Geprüft  | -         | -        |  |                |              |  |
|                   | /             | Vol.  | mm³   | Offl.                                       | mm²  | Normgepr. | -        | -                                      | Ersatz für: -  |              |  |
|                   | /             |  |  |   | Benennung<br><br>BUCHSENE INSATZ<br><br>SOCKET INSERT<br>2,5qmm 500V 16A |           |          |  |                |              |  |
| a                 | 23.04.2004/   |   |   |   |  |           |          |  |                |              |  |
| Buchstabe         | Datum / Blatt |   |   |   |  |           |          |  |                |              |  |
| Änderung          |               |   |   |   |  |           |          |  |                |              |  |